



Sheffield College Learning Resource Centres Newsletter



Welcome to the new Peaks LRC

The new Peaks LRC is open for business and you're all welcome to use the facilities. Resources that we have for you to use include:

- ❖ Information Assistants to help and advise you with finding resources for your studies, using PCs, etc.
- ❖ Study Assistants to help you with study skills, essay and report writing, referencing, etc.
- ❖ Books on all academic subjects studied at Peaks, as well as a selection of fiction, graphic novels and DVDs for you to borrow
- ❖ Journals and newspapers to read, and you can also borrow journal back copies
- ❖ Study areas where you can sit and work
- ❖ 40 PCs for both class bookings and individual study, and wi-fi access

If you need help or can't find what you want, please don't hesitate to ask any of us, that's what we're here for!

All we ask is that you keep your new LRC looking fabulous by consuming your food and drink elsewhere, and respect other users by keeping noise levels to a minimum.

All the LRC staff are looking forward to seeing you so pop in and say hello, and if you have any comments or suggestions please let us know.

Peaks LRC

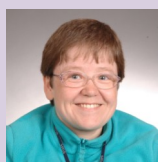
Opening Times

Mon	8.30 - 16.30
Tue	8.30 - 16.30
Wed	8.30 - 16.30
Thurs	8.45 - 16.30
Fri	8.30 - 16.00

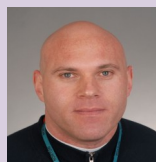
☎ Enquiries and Renewals
(0114) 260 2462

Introducing Norton & Peaks Study Assistants

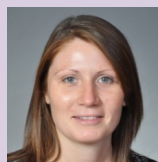
Following recent changes in staff across all the learning centres we have more Study Assistants at Norton & Peaks to help you with your studies. Our Study Assistants work across both sites and are available for 'quick fix' or one-to-one sessions of up to an hour. Call into the Learning Centre and see how we can help you.



Catherine



Dave



Hannah



Michelle



Tracey

We can help with:

- ❖ Maths and English
- ❖ ICT
- ❖ Note Taking
- ❖ Research Techniques
- ❖ Assignment Writing
- ❖ Proof Reading
- ❖ Harvard Referencing
- ❖ Time Management
- ❖ Presentations
- ❖ Revision and Exam Techniques
- ❖ CV Writing/Job Applications
- ❖ Interview Techniques



The Sheffield College Learning Resource Centres

Cross-College IT

PC Booking System

To help us spend more time helping students and staff, we have worked with IT Systems to introduce more self-service options for you. These include:

- making immediate and advance bookings
- viewing bookings made
- cancelling bookings
- booking PCs together with friends
- booking PCs in the Silent Study Room (Hillsborough)
- Unlocking student accounts
- Choosing PCs with particular resources, e.g. Photoshop
- Students can make up to six 120 minute bookings per day.

The new PC Booking System software is undergoing a four week trial at Hillsborough LRC.

Future Developments

We are moving the service forward, currently by working with IT Systems on various improvements to our Library Catalogue, which will make resources such as E-Books more accessible. We are also making the online journals and databases we subscribe to easier to access through a single log-in via Shibboleth.

We are also hoping to provide opportunities for learners to be more involved in choosing resources for the LRC, and influencing our planning as well as to take an active role in helping us improve services whilst gaining useful work experience opportunities.



Electronic books on Ebrary

Did you know we have access to a comprehensive range of electronic books? The books cover many areas studied at the Sheffield College. They are available on a special Sheffield College page on the Ebrary website. There is a quick guide on the front page to help you get started. You can access the Quickview function which allows you to view the texts without the bother of downloading. There are also a number of special features to help you navigate and view the texts such as a zoom for enlarging and a text to speech function.

The books have been supplied by the Joint Information Systems Committee (JISC), an organisation promoting ICT use in post 16 and higher education. The service is available free of charge until 2014.


Go to <http://site.ebrary.com/lib/sheffieldcoll> and follow the links.



Norton LRC

Opening Times

Mon	8.30 - 16.30
Tue	8.30 - 16.30
Wed	8.30 - 19.00
Thurs	8.30 - 16.30
Fri	8.30 - 16.00

 Enquiries and Renewals
(0114) 260 2334

Norton News

Games Club

Come and join the Games Club on Tuesday and Thursday lunchtimes in the Lower LRC from 12 noon. Try your hand at the Football Manager Challenge and much more!


You can also borrow Nintendo DSis, Sony e-readers and more from the Information Reception Desk in the Lower LRC. We have a wide selection of games for you to use.



City LRC

Opening Times

Mon	8.30 - 19.00
Tue	8.30 - 19.00
Wed	8.30 - 19.00
Thurs	8.30 - 19.00
Fri	8.30 - 16.00

 Enquiries and Renewals
(0114) 260 2134

We are always interested in hearing your views on the Learning Resource Centre service. There are a number of ways you can let us know which areas you have found useful, which you would like to change and which have been driving you mad.

There are **'have your say'** forms and boxes available on the LRC desks for your feedback. If you leave your name and number then we will personally respond to your suggestions or criticisms. If you prefer to respond anonymously, that's OK too.

The Librarians will be attending student forums throughout the year, so if you have any issues then please raise them with your student representative.

Finally, a cross college survey will be conducted later in the year which will give you the opportunity to rate the LRC service in more detail. The information will be used in our Quality Review where we plan improvements for the forthcoming year.

Hillsborough News

Here is an update on what has changed in Hillsborough LRC this year. Due to the reshaping of the LRC staffing during the last academic year, we are in the process of changing many of our internal procedures to cope with having fewer staff. We apologise for any inconvenience this may cause. Here are the major changes to note:

IT Systems are currently working on making it possible for Teaching Staff to book PCs for groups either from the Kiosk, or from your desktop. Until this facility is available we are using the paper timetable sheets for staff to book their groups into the LRC. We have asked staff to add and amend or delete their own bookings from the timetable. Most staff have found this very user-friendly. Timetables for next term will be available to book onto from the week commencing 12th December. Our 26 PCs will then be available on a first come, first served basis for ALL staff to book their groups in. Given the huge demand by teaching staff for this resource, we feel it is fairer to have group bookings done this way. Please speak to your Head of Department or Richard Deane if you are not able to access the IT resources you need for your classes.

We have a couple of new staff who have joined us from Norton and Peaks, Kathryn Stanbra and Lulu Landale. Also Elaine Kent is back to help us out for a couple of sessions a week for this year. Due to staffing changes we have had to reallocate curriculum link areas amongst our permanent team.


Your new Hillsborough LRC Link person is:

- Ian Sharp** - Art & Design, Communications, Fashion, Horticulture, Business & Management, Sport & Leisure
- Kathryn Stanbra** - Law, Public Services, Health & Social Care, Childcare, Education, Medicine
- George Rogers** - Psychology, Languages, Film/Media, Geography, History, and Travel guides
- Claire Williams** - IT, Sociology, Politics, Economics, Travel & Tourism
- Lulu Landale** - Maths and Science

Hillsborough LRC

Opening Times

Mon	8.30 - 16.30
Tue	8.30 - 19.00
Wed	8.30 - 16.30
Thurs	8.30 - 15.30
Fri	8.30 - 16.00

 Enquiries and Renewals
(0114) 260 2254

I'm pretty sure the undo button won't work in this instance.



So where's your data kept?

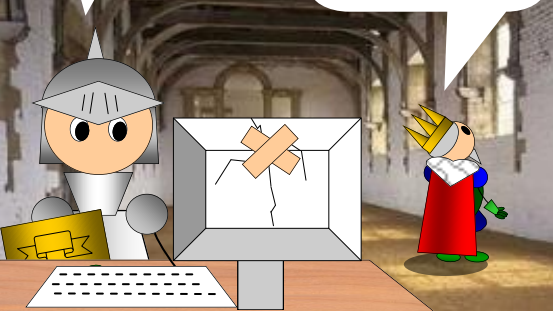
I've got a 3½ inch floppy

Never mind. It's personality that counts



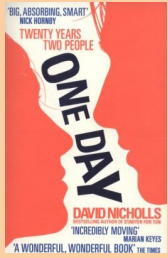
Right, it's all on cloud storage.

And you're sure I won't lose it if it rains?



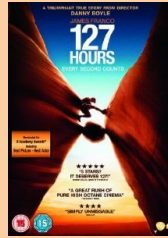
Quick Reviews

If you liked the recent film you might like to try the book on which it was based. Here's how one critic described 'One Day' by David Nicholls - 'The funniest, loveliest book I've read in ages. Most of all it is horribly, cringingly, absolutely 100% honest and true to life: I lived every page.' - **Jenny Colgan**



Available from City and Hillsborough LRCs

A triumphant true story from Danny Boyle, director of *Slumdog Millionaire*. The incredible true story of mountain climber Aron Ralston's (James Franco) remarkable adventure to save himself after a falling boulder crashes on his arm and traps him in an isolated slot canyon in Utah. With only a day's worth of water, a blunt penknife and an unwavering will to survive Aron does everything he can to make it out alive - **Amazon**



Available from Norton and Peaks LRC

Student Competition



Anagram Puzzle

Simply unscramble the letters below to get the names of seven subjects studied at Sheffield College. When you enter them into the boxes provided the shaded areas will reveal an eighth subject. This is the answer you need.

Closing date 13 Jan 2012. Correct entries will be entered into a draw.

ahmst	<input type="text"/>	<input type="text"/>	<input type="text"/>	<input type="text"/>	<input type="text"/>	<input type="text"/>	<input type="text"/>
ciilpst	<input type="text"/>	<input type="text"/>	<input type="text"/>	<input type="text"/>	<input type="text"/>	<input type="text"/>	<input type="text"/>
beinssu	<input type="text"/>	<input type="text"/>	<input type="text"/>	<input type="text"/>	<input type="text"/>	<input type="text"/>	<input type="text"/>
acegint	<input type="text"/>	<input type="text"/>	<input type="text"/>	<input type="text"/>	<input type="text"/>	<input type="text"/>	<input type="text"/>
oprst	<input type="text"/>	<input type="text"/>	<input type="text"/>	<input type="text"/>	<input type="text"/>	<input type="text"/>	<input type="text"/>
cefhr	<input type="text"/>	<input type="text"/>	<input type="text"/>	<input type="text"/>	<input type="text"/>	<input type="text"/>	<input type="text"/>
biglooy	<input type="text"/>	<input type="text"/>	<input type="text"/>	<input type="text"/>	<input type="text"/>	<input type="text"/>	<input type="text"/>



Entry slip - hand this in at any LRC desk
or email your answer to ian.sharp@sheffcol.ac.uk (please put **COMPETITION** in the subject field)

The eighth subject is _____

Name _____ Student number _____

Email _____